

SCOPE OF THE UNETE MODEL

FEBRUARY 2023



UNETE THROUGHOUT MEXICO



7,612
MEDIA LABS



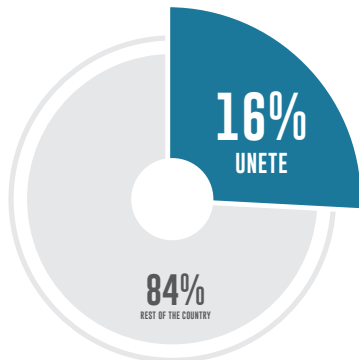
9,581
SCHOOLS SUPPORTED



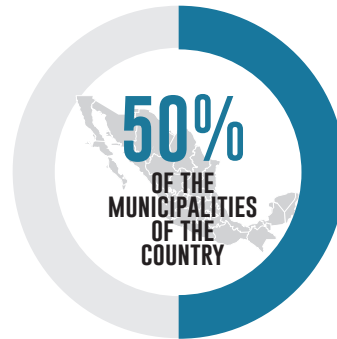
2,814,531
STUDENTS LEARN WITH UNETE
more than the total of students attending basic school in Chile 1,914,000 ⁽¹⁾



115,152
EDUCATORS TEACH WITH UNETE
more than the total of public school teachers in the states of Baja California Sur, Campeche, Colima, Nayarit, Morelos y Quintana Roo together⁽²⁾

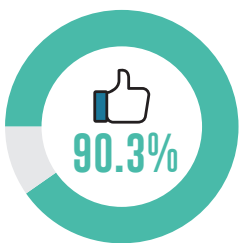


Population of the 17,378,298 public school students in Mexico 12% are supported by UNETE⁽³⁾



UNETE is present in 1,233 municipalities of the 2,458

EDUCATIONAL SERVICES



BENEFICIARIES STATE THAT THE SERVICES ARE OF GOOD QUALITY AND HAVE IMPROVED THEIR KNOWLEDGE OF TECHNOLOGY

(Filantrofília 2012)



UNETE COMMUNITY
MORE THAN **27,366** registered teachers in the educational portal



TRAINING
MORE THAN **30,000** teachers trained in the Training Path



MENTORING
MORE THAN **1,200** schools benefited from classroom intervention



CONTENTS
MORE THAN **180 GB** educational content preloaded on school servers

ECONOMIC MULTIPLIER



For every \$1 peso invested by UNETE

\$25.6 PESOS

are created to benefit mexican society in the following 5 years (Social Return on Investment RSOI)

(Filantrofília 2013) ⁽⁴⁾

INSTITUTIONAL DEVELOPMENT

In 2014 UNETE was evaluated by **Filantrofília** ⁽⁵⁾

with an institutional rating of

3.75 on a range 4.0 scale **A+**

rating more high granted in Mexico



Certified by GPTW in 2014 and 2015



Certified by CEMEFTI in 2014



HAPPINESS AND MOTIVATION

UNETE supported students are more motivated to learn and happier than their peers at non-UNETE supported schools. (Teachers Country)

(1) Source: Government of Chile, Ministry of Education Research Center. Statistics Publications 2013
(2) Source: National System of Education Statistics 2013 (SNIE)

(3) Source : INEGI - SEP . Census of Schools , Teachers and Students of Basic and Special Education, CEMABE 2013
(4) Appraising institution of civil society

SCHOOLS WE SUPPORT BY STATE

FEBRUARY 2023

